

AIR FLOW



OUR WARRANTY

Air Flow Pvt. Ltd. warrants its equipments to be free from defects in material and workmanship for a period of one year from the purchase date. Any Units or parts which prove defective during the warranty period will be replaced at our option when returned to our factory, transportation prepaid. Motors are warranted by the motor manufacturer for a period of one year. Should motors furnished by Air Flow Pvt. Ltd. prove defective during this period, they should be returned to the nearest authorized motor service station. Air Flow Pvt. Ltd. will not be responsible for any removal or installation costs.

Catalogue Reference :
AFPL : C51 - 23CR023C R1

- + Product improvement is a continuing endeavor at Air Flow therefore descriptions and specifications given herein are subject to change without any prior notice.
- + For queries and details, refer to our technical catalogue.

Reinventing
TECHNOLOGY



AIR FLOW PVT. LTD. (An ISO 9001 : 2015 Certified)
J-90 & 91, Site-V, Surajpur, UPSIDC Industrial Area, Kasna, Greater Noida (U.P.-201310)
Phone : +91-120-4295526, +91-120-4295527
Email : mail@airflow.in, sales@airflow.in
Website : www.airflow.in





LEADING MANUFACTURER

& EXPORTER OF

HVAC EQUIPMENTS





ABOUT US

We “Efforts Combined with a sincere selfless Commitment and continuous pursuance of excellence Translate into Success;”

At Air Flow, These 5 decades of existence have been an endless process of attaining ‘Success’ with enhancing capabilities, consolidating commitment and cementing faith in quality and innovation. **Right from the inception in 1973**, we have been leaders in manufacturing and Exporting Axial Flow Fans, Jet Fans, Inline Fans, Air Terminal Products, Air Distribution Products, Smoke /Fire Damper through this long duration of time. The way we’re empowering our product line and winning laurels from our clients world over by continuously improving upon our existing set on skills, technology and range, we are poised to set more and more landmarks globally in the future.

Air Flow has a team of hard core professionals who believe in ‘just make it happen’ Our tremendous growth over the year speaks volumes about our professional integrity and never-say-die spirit. Surely, at Air Flow we understand the importance of staying self- motivated and determined to make a difference through what we do.

We are truly committed to deliver high quality products being tested & developed with our in-house R & D facility under the initiative of “Make in India” and expanding our wings globally by exporting our products to African, USA, UAE, Middle East, SAARC, Countries and across the globe.

LAURELS ACCLAIMED



**Acrex Excellence Award for
“Technology Developed in India”**



**SME Excellence Award in
“ Manufacturing Sector”**



**Asian African
“Leadership Award”**

INCEPTION IN
★★ 1973 ★★



50 YEARS

EC Fans



Flexible Duct Connector
BS 476 Part -7
& "NFPA - 701"

Amca Certified
Plug Fan (AFPF)



Amca Certified
Axial Fan (AFPV4G)



CE Certified
Fans



Amca
Certified
Inline Fan
(AFMI)



USA Export

UL Listed Fan
(300 Deg/2hrs
250 Deg/2hrs)



Amca Certified
Vane Axial Fan
(AFPVX)



Amca Certified
Axial Fan (AFPV3G)

Fire Rated
Axial/Jet Fan
(250 Deg/2hrs)



Middle East
Export



Amca Certified
Axial Fan



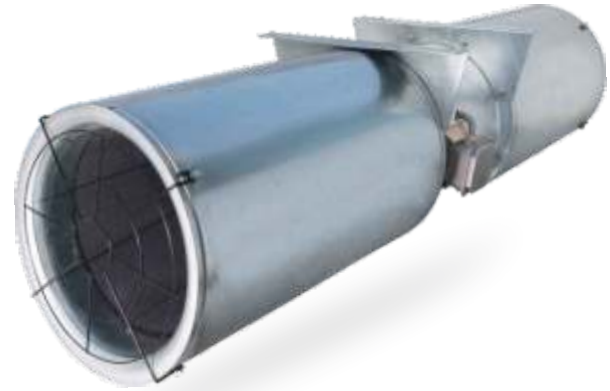
Axial Flow Fan

- Direct Driven Type.
- Size 315 to 2000 mm Diameter.
- Air performance upto 393,000 CMH.
- Static pressure upto 93 mm wg.
- Adjustable / Controllable Pitch Impeller.
- Certified for **Sound & Air Performance**.
- **CE Certified** in accordance with CPR (EU-305/2011) & EN 12101-3:2015 for 300°C/ 120 min.
- **UL Listed** in accordance with "Power Ventilator for Smoke Control Systems" for 250°C/ 120, 300°C/ 120 & 400°C / 30 min.
- Powered Smoke & Heat Exhaust Ventilator & Smoke Spill.
- Suitable for Basement Car Park, Tunnel, Lift & Staircase, Pressurization, Industrial Ventilation.



Vane Axial Fan

- Direct Driven Type.
- Size 315 to 2000 mm Diameter.
- Air performance upto 393,000 CMH.
- Static pressure upto 82 mm wg.
- Adjustable / Controllable Pitch Impeller.
- Certified for **Sound & Air Performance**.
- **CE Certified** in accordance with CPR (EU-305/2011) & EN 12101-3:2015 for 300°C/ 120 min.
- **UL Listed** in accordance with "Power Ventilator for Smoke Control Systems" for 250°C/ 120, 300°C/ 120 & 400 / 30 min.
- Suitable for Basement Car Park, Tunnel, Lift & Staircase, Pressurization, Industrial Ventilation.



Impulse Jet Fan

- Size 315, 355, 400 mm Diameter.
- Air Performance upto 11,150 CMH.
- Single Speed and Dual Speed option.
- Uni-directional and Fully Reversible Models.
- Performance Assured by CFD Analysis.
- Certified for **Sound & Air Performance**.
- **CE Certified** in accordance with CPR (EU-305/2011) & EN 12101-3:2015 for 300°C/ 120 min.
- **UL Listed** in accordance with "Power Ventilators for Smoke Control Systems" for 250°C/ 120, 300°/120& 400°C/ 30 min.



Induction Jet Fan

- Direct Driven Type.
- High Air Performance.
- Single Speed & Dual Speed Options.
- Tested in Accordance with BS EN 12101-3 for 250°C/120 & 300°C/ 120 min.
- Compact Housing Design.
- Ideal Solution for Car Park with low ceiling height.
- Long distance throw, High Thrust.

400°C/30 min, 300°C/2Hrs & 250°C/2Hrs
in accordance with "Power ventilators for smoke control systems"



Plug / Plenum Fan.

- Direct Driven Type.
- Sizes from 315 mm to 1000 mm Diameter.
- Air Performance upto 64000 CMH.
- Static Pressure upto 350 mm wg.
- Backward Curve Aerofoil Aluminium & Steel Impellers.
- Certified for **Sound & Air** Performance.
- Maintaince Free, High Efficiency and Low Noise.
- Suitable for AHU, Fan Section, Liftwell, Stairwell, High Temperature applications, Basement Car Park, Industrial Application.

- Highly Energy Efficient.
- Compact Design.
- Silent Operation.
- Maintains IAQ, No Toxic and Aggressive Dust created from Belt.
- Low and Easy Maintenance.
- Latest Fan Technology.
- Guaranteed Performance in Radical Atmospheres.

EC CENTRIFUGAL FAN
FOR GREATER POWER
AND EFFICIENCY



Centrifugal Fan (Forward Curve)

- DIDW (AFFC) / SISW (AFFC-SI).
- Belt Driven Type.
- Size from 180 to 1400 mm Diameter.



- Air Performance: DIDW upto 250,000 CMH. SISW upto 80,000 CMH.
- Static Pressure upto 220 mm Wg.



Centrifugal Fan (Backward Curve)

- DIDW (AFBC) / SISW (AFBC-SI).
- Belt Driven Type.
- Size from 315 to 1400 mm Diameter.



- Air Performance: DIDW upto 250,000 CMH, SISW upto 80,000 CMH.
- Static Pressure upto 450 mm Wg.
- High Efficiency.



Centrifugal Fan (DIDW)

- Belt Driven (AFFC) / Direct Driven (AFDD).
- Air Performance 10,200 CMH.
- High Efficiency and Low Sound Level.
- Size from 7 to 18 Inch Diameter.
- Static Pressure upto 150 mm Wg.



Mixed Flow Inline Fan

- Direct Driven type, Mixed Flow Impeller.
- High Efficiency and Low Sound Level.
- Dual Speed Motor (Rating IP44).
- Size 100 to 315 mm Diameter.
- Air Performance upto 2,020 CMH.
- Static Pressure upto 66 mm wg.
- Certified for Sound & Air Performance.



Silent - Mixed Flow Inline Fan

- Direct Driven Type, Mixed Flow Impeller.
- Sound wave hole & Two Layer Sound Absorbent Cotton to reduce Noise.
- Dual Speed Motor (Rating IP 44).
- Size 100 to 200 mm Diameter.
- Air Performance upto 500 CFM.
- Static Pr upto 36 mm wg.



Bifurcated Inline Fan

- Direct Driven Centrifugal Fan.
- Air Volume upto 1500 CMH.
- Motor Outside Air Stream.
- Low and Easy Maintenance.
- Suitable for Kitchen Exhaust & Industrial Applications.



Circular & Cabinet Inline Fan

- DIDW & SISW Direct Driven Type.
- Circular & Cabinet Type.
- Size:- AF (Circular) 4 to 12 Inch Diameter.
AFDD (Cabinet) 7 to 12 Inch.
- Air Performance: AF (Circular) upto 1600 CMH.
AFDD (Cabinet) upto 6000 CMH.
- Single Phase Motor with Standard Thermal Overload Protection (S.T.O.P).



Cassette Exhaust Fan

- Direct Driven Centrifugal Fan.
- Size from 200 to 300 mm dia.
- Air Volume upto 200 CMH.
- Low Noise and Easy Maintenance.
- Suitable for Toilet Exhaust application.



Cabinet Fan Section Air Washer/Air Scrubber



- Belt Driven/Direct Driven.
- Forward Curve & Backward Curve Impeller.
- Air Performance upto 68,000 CMH.
- Static Pressure upto 150 mm Wg.
- Fine Filter, Hepa Filter, Bag Filter, Strip Heater option are also available.
- Extended shaft fan for Motor outside air steam is also available.
- Suitable for Fresh Air, Exhaust Air, Industrial, Kitchen Exhaust Application etc..



Cabinet Plug Fan

- Direct Driven Aluminium Plug Fan.
- Highly Energy Efficient.
- Universal Air Outlet (Left, Right or Top, Can be Field Adjustable).
- Low and Easy Maintenance.
- Available in Single Skin / Double Skin Cabinet / Acoustically Lined.
- Suitable for Kitchen Exhaust, Outdoor & Industrial Applications.
- Suitable for Fresh Air, Exhaust Air, Industrial Exhaust Application.
- Fine Filter, Carbon Filter, Hepa Filter, Bag Filter Options are also Available.



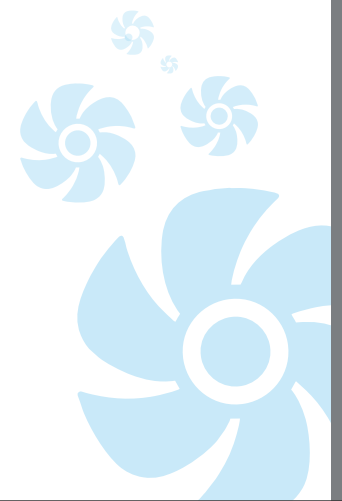
Bifurcated Cabinet Fan

- Direct Driven Aluminium Plug Fan.
- Highly Energy Efficient.
- Motor Outside Air Stream.
- Universal Air Outlet (Left, Right or Top, Can be Field Adjustable.)
- Low and Easy Maintenance.
- Available in Single Skin / Double Skin Cabinet / Acoustically Lined.
- Suitable for Kitchen Exhaust, Outdoor & Industrial Applications.



Flexible Duct Connectors

- Fire Resistant, Silicone Rubber Coated Canvas Cloth.
- Insulated / Non-Insulated.
- Water Proof, Air Tight, Virtual Chemical Inert Material.
- Withstand Strong Sunlight, Weathering Ageing.
- Emit Minimal Fumes when exposed to flames without burning.
- Suitable for Industrial, Basement Car Park, Commercial Applications etc.
- Certified in accordance with BS 476 Part 7 for Class 1.
- Certified in accordance with NFPA 701.

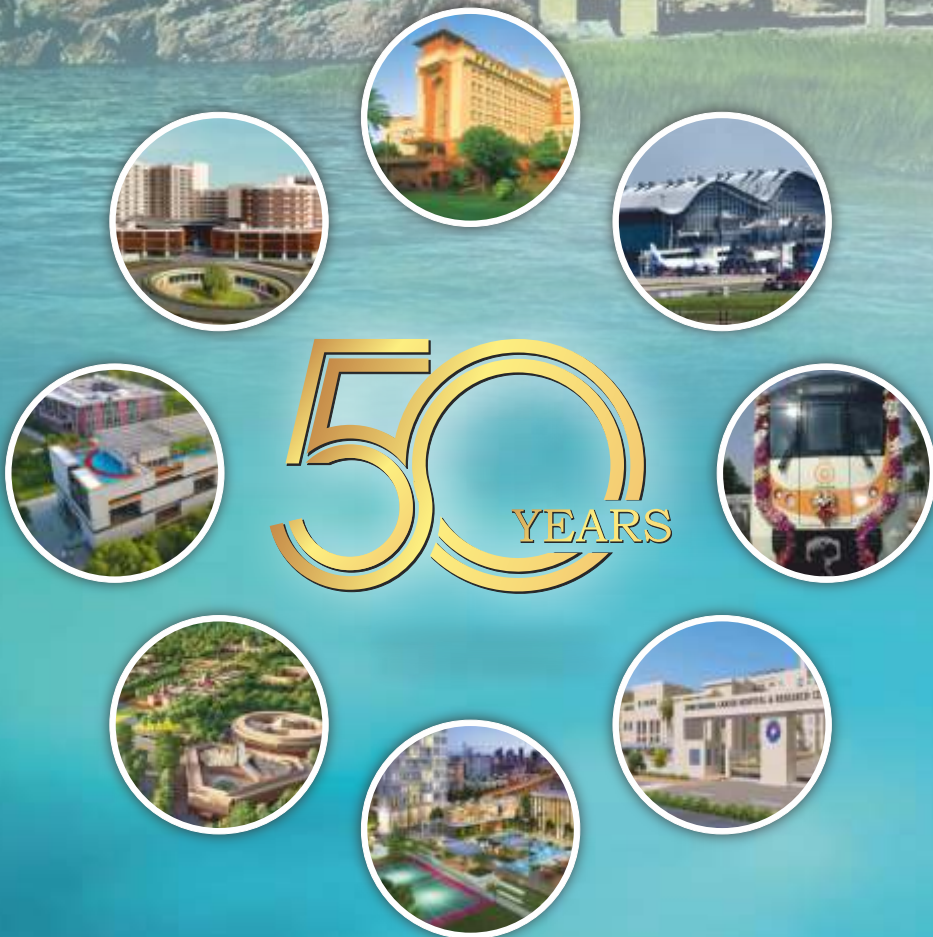




WE BUILD VALUE IN YOUR AIR
ONE STOP SOLUTION
 FOR YOUR COMPLETE
HVAC NEEDS



KEY PROJECTS



REINVENTING
TECHNOLOGY

Find the
Globally
 Trusted Mark on
 Our Products



Accordance with CPR (EU-305/2011 & EN 12101-3:2015 for 300°C / 120 min.



In Accordance with "Power Ventilators for smoke control systems" or 300°C / 2 hrs & 250°C / 2 hrs



Sound & Air Performance - FEG

AIR DISTRIBUTION PRODUCTS



Linear Grille

Linear Grille with fixed bars at front or vertical bars at rear having 0, 15 and 30 degrees deflection to suit every interior with fixed or removable core. Wide range of possible combinations suitable for side wall, ceiling suspended or false floor grilles.



Double Louver Adjustable Grille

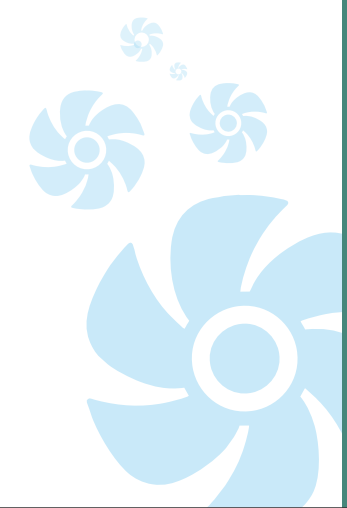
Supply or return air grille with single or double deflection adjustable louvers, to provide multi directional air flow.

Optionally, front fixed louvers at 0, 15 and 30 degrees deflection, available in combination with Rear Vertical adjustable louvers.



Air Intake Louvers

Fresh Air Intake / Exhaust Louvers offering wide range of applications suitable for most external wall / screening applications even under adverse weather conditions. Angles of louvers are Placed in such a fashion that rain water does not ingress and drops outside the frame.





Ceiling Diffuser



Round Diffuser



Plaque Diffuser

High capacity Louvered face directional diffusers designed to supply large volumes of air at relatively low sound level and pressure drop. Available in square or rectangular shape, with anti-smudge frame and removable inner core to facilitate adjustment of air control damper.



Slot Diffuser

Multi - slot construction having fully adjustable Air Flow Pattern, achieved by means of two deflectors per slot. Air Flow direction in each slot is individually adjustable. Hit & miss dampers (HM) are provided to control Flow rate without affecting the air pattern.



Laminar Flow Diffuser

This modular ceiling diffuser is specifically designed to provide low velocity laminar air flow pattern required in clean room Labs and operation theaters.

Removable perforated face panel allows easy plenum access for cleaning and adjusting damper.

Optional HEPA Filters/plenum mounting system.



Swirl Diffuser

Swirl diffusers offer efficient alternative to conventional ceiling diffusers as they produce aerodynamically controlled air pattern, promote high induction and provide rotation to room air, which increases mixing effectiveness.



Helical Diffuser

Another variant of high induction swirl diffuser with individually adjustable radial blades for optimal diffusion, ensuring an instant mixture of primary and secondary air.



Jet Nozzle



Spot Diffuser



Eye Ball

Jet Nozzle, Spot Diffuser, Eye Ball are used for preferences where the supply of air from the diffuser has to travel a large distance to occupied zone, in the large areas (halls, warehouses, shopping malls assembly rooms etc). Jet Nozzle are versatile in application and are rotatable and reversible, which allows the air jet to be adjusted for both pattern and deflection. On the other hand, in Eyeball and Spot Diffuser, the direction of air can be changed by swivel movement of the eyeball within a solid angle range 40 degree. These are designed for aerodynamic flow resulting low noise characteristic.



Drum Louver

Drum Louvers is ideal for large spaces like Airports, warehouses, sports halls, and factories. Made from aluminium extrusions, it's designed to throw air over long distances. It's fully adjustable, providing directional control and a full jet spread. Also features brush strips that create an airtight seal and reduce friction.





Egg Crate Grille

Egg Crate Grille is one of the many exhaust application devices available which offers both Engineering and Architectural requirements.



Non - Vision Door Grille

Non vision door grille with one side fixed and other removable flange, an ideal fit for kitchen, toilet doors for transfer of air with 0% across visibility.



Toilet Exhaust Valve

These valves are best applied to air exhaust specially for low air flow movements in circular ductwork. The valves provide high initial resistance with wide throttling capability which offers to offset the relatively high system resistance.



Constant Volume Regulator (KVR)

KVR is a solution which regulates air flow at precise constant level in duct system with the help of modulation orifice without the use of any electric or pneumatic sensors or controls. It helps in improving IAQ by achieving desired air changes as per ANSI/ASHRAE standard 60-2010. KVR is made out of flame retardant PVT, Fire classification M1 covering 15 CMH to 1200 CMH within the pressure range from 50 Pa to 600 Pa.



Smoke & Fire Damper

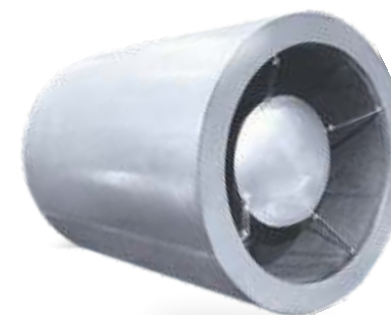
Smoke & Fire Dampers are made in strong GI construction, equipped with internationally proven and certified mechanical and electronics controls that ensure the air is shut off in the system automatically, safely and surly in case of fire, smoke or raise in temperature. Thus effectively controlling the fire and its speed through Air Handling System.

Aluminum Low Leakage Damper

The low leakage extruded aluminum volume controllers are a range of robust, leakproof, smooth-acting dampers that are used in HVAC system, AHU outlet, Clean rooms for shutoff, regulation and mixing functions.

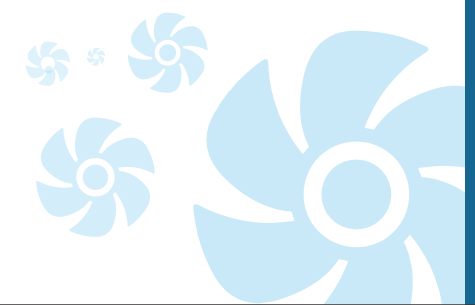
High strength aerofoil blades insure the lowest resistance to airflow in system.

The GI sheet dampers are constructed of heavy gauge GI Sheet formed to 3V design blades allowing smooth air flow in open condition, air sealing by overlapping in closed position are mounted on square steel shafts.



Round / Rectangular Sound Attenuator

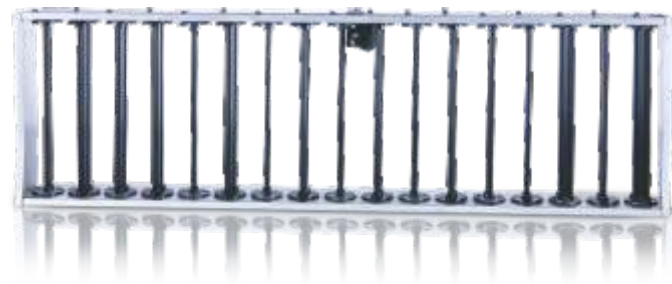
Sound Attenuator have the casing from galvanized steel sheets. Attenuating splitters are constructed from press formed frame work of G.I sheet which incorporate high density and highly absorbent Fiber Glass Insulation material with fiber glass Tissues converting with perforated aluminum sheet. the splitters have fared entry and exit noses to minimize pressure drop.





Round Spigot

Mapro's round spigot is an ideal requirement for every round duct project, these spigots screwed with duct at their flanges and another cylindrical side is ready for fixing with round flexible duct. Saves time, economical and make airtight joints.



Grille Collar Damper Aluminum

The opposed blade damper is available in a range of sizes to regulate the air volume at individual grilles / diffusers from fully open to close.



Round Damper

Single Flap / opposed blade damper is available in a range of size to regulate the air volume at individual grille / diffusers from fully open to close



In-House Research & Development

Air Flow team of dedicated engineers are committed to deliver high quality products with best in class international certification. Our dynamic in house research & development team works dedicatedly to design highly efficient products, which helps us to lead the industry rather than follow the market.

Advance Engineering computer softwares inspired by aviation technology like aerodynamic design, Computational Fluid Dynamics (CFD) etc. & in-house testing facility helps us to design & manufacture world class products. Our product designs are well accepted across the globe as the first & foremost ventilation product solution in terms of safety, high efficiency & low sound levels.

We truly stand committed to raise the industry standards by designing high quality products. All this would have not been possible without our dedicated research & development team.





Our Global Presence



Manufacturing Plant
Greater Noida & Kosi Kotwan
Spread across 58,000 Sq. Mtr.



Greater Noida (Corporate Office)
New Delhi (Registered Office)
Ahmedabad, Bangalore, Indore, Jaipur,
Mumbai, New Delhi, Pune (Sales & Service Office)

● **5,000**
Customers worldwide

🕒 **50** | years of experience | 🌐 **10%** | export worldwide

📊 **40,000+** | Successful Installations | 👤 **400+** | people employed



AFRICA



USA



SAARC



List of Prominent Installations

AIRPORTS

Agartala Airport
Chennai International Airport
Chandigarh International Airport
Cochin International Airport
Delhi International Airport Limited
Goa Airport
Gwalior Airport
Indore Airport
Jaipur Airport
Lucknow Airport
Patna International Airport
Rajiv Gandhi International Airport
Rajkot Airport
Sikkim Airport
Safdarjung Airport
Sardar Vallabhbhai Patel International Airport
Varanasi Airport

AUTOMOBILE SECTOR

BMW
Hero
Honda
Hyundai
JCB
KIA
Morris Garages
Mercedes Benz
Maruti Udyog
Nissin Brakes
TATA Motors
TVS Suzuki

CLEAN ROOMS

Biocon Pharma
Calvin Klein
Colgate Palmolive
Dabur India
Dr. Reddy's Laboratories
Micro Lab
Pfizer
Ranbaxy Limited
Wockhardt

EMBASSIES

American Embassy
Australian High Commission
Austrian Embassy
British High Commission
Canadian High Commission, New Delhi
Denmark Officer Residence
Egypt Embassy, New Delhi
Japan Embassy Ambassador Residence
Oman Embassy, New Delhi
Saudi Embassy
UAE Embassy

GOVERNMENT SECTOR

AG office Dehradun
ASI
Central Vista
Delhi University
Government Medical College, Chandigarh
High Court of Delhi
Kartarpur corridor
Lucknow High Court
Lucknow Secretariat
Nausena Bhawan
Parliament Library
Parliament Annexe
PUDA- Mohali

Rashtrapati Bhawan
Statue of Unity
Shivaji Stadium
Scope Tower
Supreme Court of India
Vigyan Bhawan

HOTELS

Ashoka Hotel
Country Inn & Suites
Lemon Tree
Maurya Sheraton
Mysore Intercontinental Hotel
Oberoi Group of Hotels
Park Group of Hotels
Radisson Blue Group
Sarovar Portico
Taj Group of Hotels

HOSPITALS

All India Institute of Medical Sciences
Amrita Hospital
Bhagwan Mahaveer Hospital
Bhimrao Ambedkar Hospital
Covid Hospital, Delhi
Delhi Govt. Hospital, Narela
Dental College Rhotak
ESIC
Maharaja Agarsen Hospital
Nayabad Cancer Hospital
Novartis Hospital
Safdarjung Hospital
Tata Memorial Cancer Hospital

IT & CORPORATE OFFICES

Accenture
ASF
Birla Corporate Office
Flipkart
Gigaplex Complex
HCL Technologies
Honeywell
Oracle
Prestige Tech Park
Qualcomm Bangalore
REC
RITES
Sapient technologies
Sohini IT Park
Satta Megasoft
Wipro Technologies

INSTITUTIONS

American Embassy School
Ahmedabad University
Ashoka University
G.D. Goenka International School
Indian Institute of management
Indian Institute of Technology
Indira Gandhi Open University
IIIT Nagpur
IIIDEM Dwarka
IIT Ropar
NIT Narela
NIFTM
OP Jindal University
Shiv Nadar University

METRO

Delhi Metro
Jaipur Metro
Lucknow Metro
Nagpur Metro

MULTIPLEXES & MALLS

Global Mall
Inox Cinemas
IKEA Hyderabad
Lulu Mall
Miraj Cinema
Pacific Mall
PVR Cinemas
Satyam Cineplex

POWER PLANT

BHEL
Lower Jaurala
NHPC
NTPC
Reliance Power Rosa TTP
RPG
Sravanthi, Kashipur

REAL ESTATE SECTOR

Blue Ridge
Brigade Group
DLF Group
DLF Cammellias
Godrej Properties
Hiranandani Group
Hero Homes
IREO
K Raheja Corp
Lodha Group
M3M
Mahagun Group
Phoenix Group
Panchshil Realty
Prestige Group
Raheja Builders
Raymond Realty
Sobha Group
Trump Tower
TATA Housing

STEEL PLANTS

Bhushan Steel
JSW
SAIL
TATA Steel

TELECOM

Bharti
Idea
Reliance Group
Samsung
TATA Indicom
Vodafone

OTHER INSTALLATIONS

Air Force Auditorium
Amazon Warehouse
Express Newspaper Limited
Haldiram Factory Nagpur
Ram Manohar Lohia Trust, Etawah
Reliance Industries Limited
TATA Chemicals Limited
UFLEX
Welspun Synthetics Limited

CONVENTION CENTRE

Expo Mart - Noida
ITPO Delhi
IMTMA Bangalore
JECC
Pragati Maidan

